



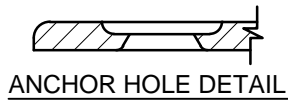
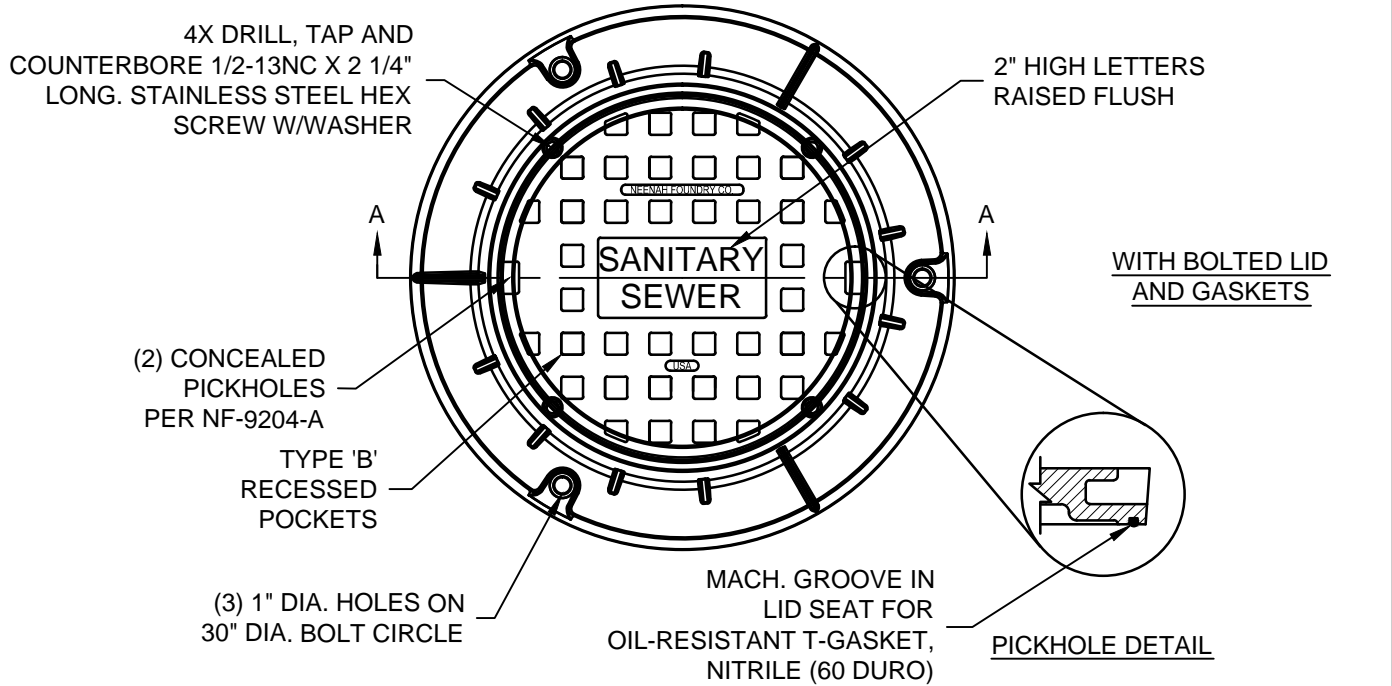
24" WATERTIGHT SANITARY CASTING

Created: July 8, 2010

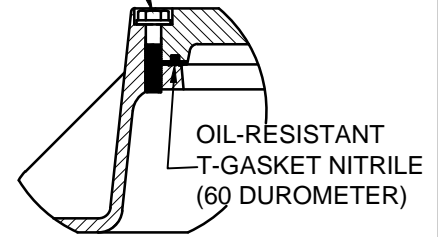
Revised: August 22, 2013

Scale: N.T.S.

Approved: May 16, 2012



1/2-13NC X 2 1/4" LONG STAINLESS STEEL HEX SCREW W/WASHER



NOTES:

1. ASTM A48 CLASS 35B
2. ALL BEARING SURFACES TO BE MACHINED

FRAME AND SOLID, BOLTED LID
NEENAH R-1772 W/"SANITARY SEWER"
LETTERED, SOLID BOLTED LID
(SANITARY APPLICATION ONLY)

