

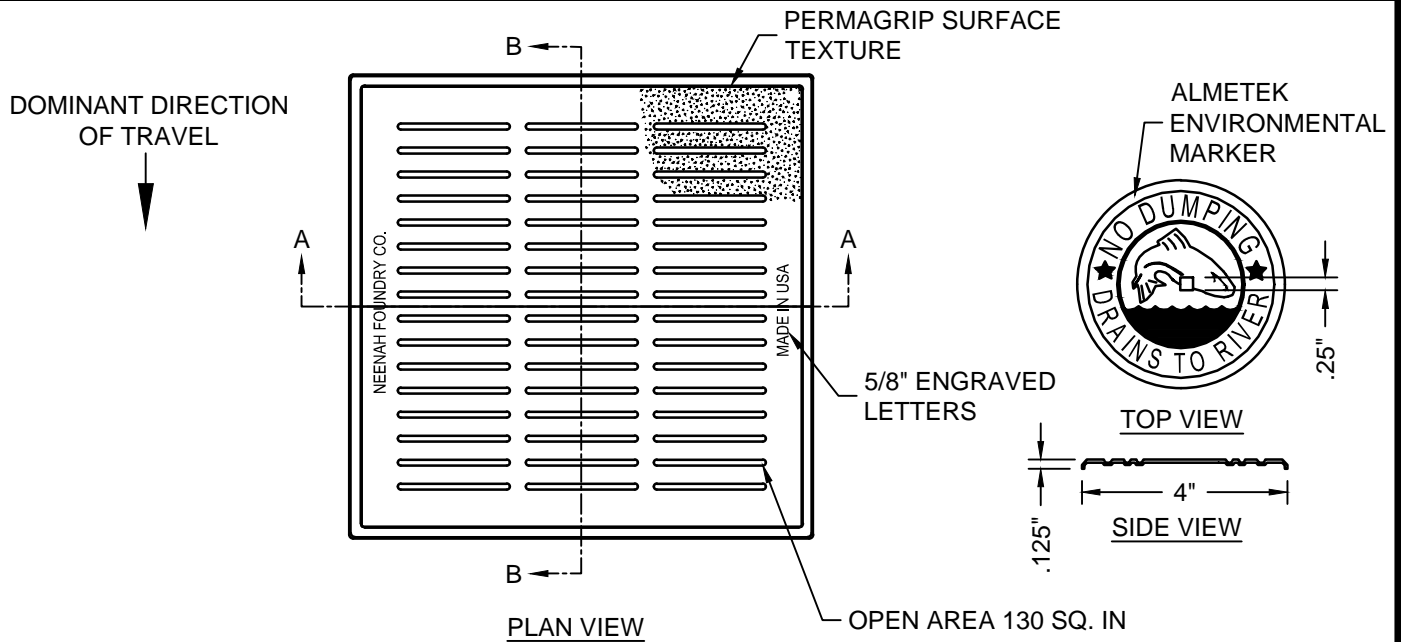


26" X 26" LOW PROFILE ADA CASTING

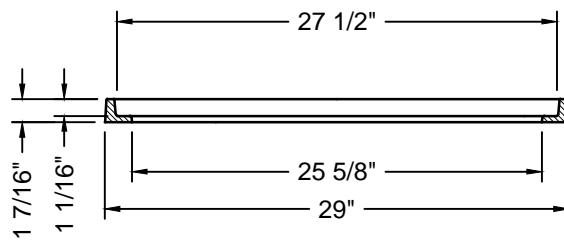
Created: June 15, 2017

Revised: February 21, 2018

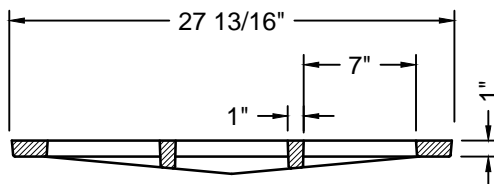
Scale: N.T.S.



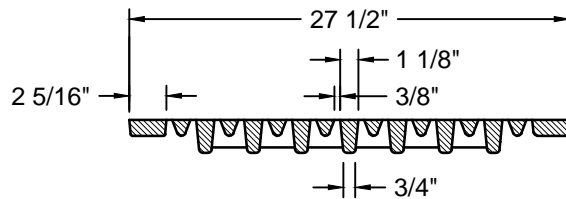
FRAME AND SOLID LID
NEENAH R-4859-Q ANGLE FRAME GRATE
W/ ALMETEK ENVIRONMENTAL MARKER



FRAME SECTION



SECTION A-A



SECTION B-B

NOTES:

1. ASTM A48 CLASS 35B
2. DESIGN LOAD: HEAVY DUTY
3. TO BE USED WITH 2' X 2' INLET STRUCTURE
4. COMPONENT NO'S: FRAME 4871-3001, GRATE 4859-3002
5. TO BE USED WITH 2' X 2' INLET STRUCTURE