

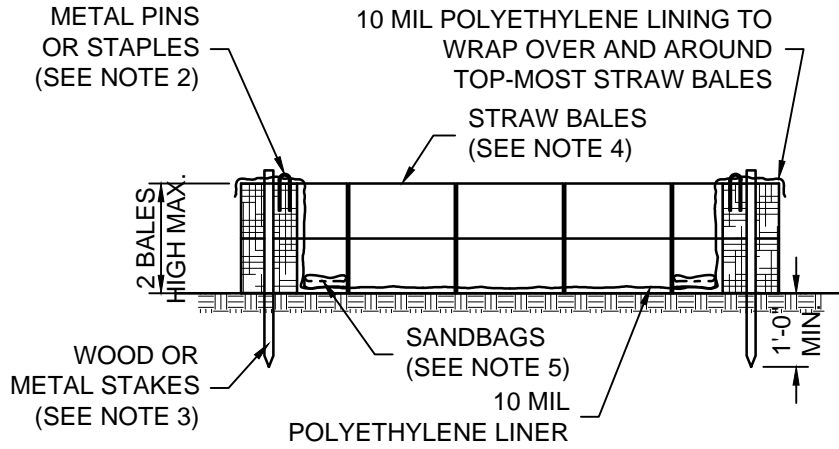


# CONCRETE WASHOUT - ABOVE GRADE

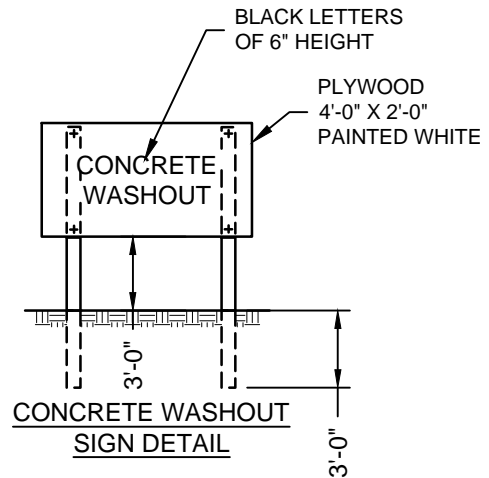
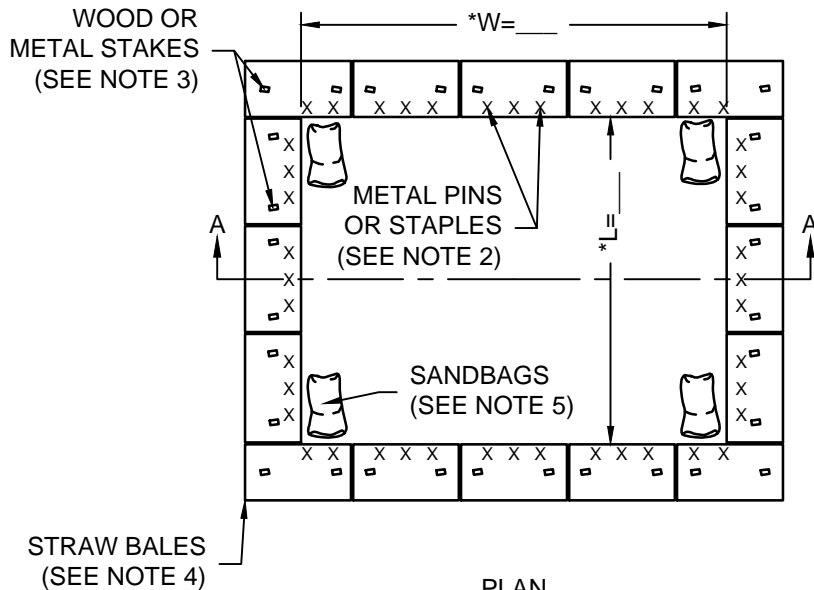
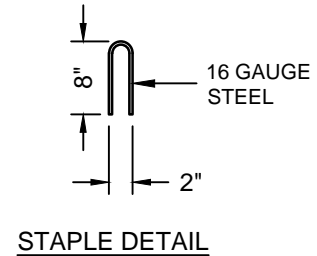
Created: December 2, 2011

Revised: January 24, 2017

Scale: N.T.S.



SECTION A-A



ABBREVIATIONS:  
\*L = INSIDE LENGTH  
\*W = INSIDE WIDTH

**NOTES:**

1. THE CONCRETE WASHOUT SIGN SHALL BE INSTALLED WITHIN 10 FT. OF THE TEMPORARY CONCRETE WASHOUT UNIT.
2. THE POLYETHYLENE LINER SHALL BE SECURED TO STRAW BALES WITH METAL PINS OR STAPLES.
3. WOOD OR METAL STAKES TO SECURE THE STRAW BALES (2 PER BALE)
4. ALTERNATIVE MATERIALS CAN BE SUBSTITUTED FOR THE STRAW BALES TO PROVIDE STRUCTURAL CONTAINMENT WITH PRIOR APPROVAL FROM CITY UTILITIES PROGRAM MANAGER.
5. SANDBAGS, GRAVEL-FILLED BAGS OR OTHER APPROPRIATE ANCHORING SYSTEM SHALL BE USED TO HOLD POLYETHYLENE LINING DOWN.
6. PREFABRICATED WASHOUT SYSTEMS MAY BE USED WITH PRIOR APPROVAL FROM PROJECT ENGINEER.
7. THE SYMBOL "\*" INDICATES A DIMENSION THAT IS TO BE DESIGNED BASED ON EXPECTED QUANTITY OF MATERIAL