

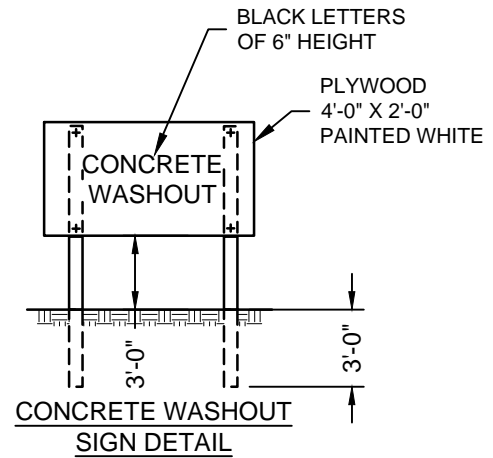
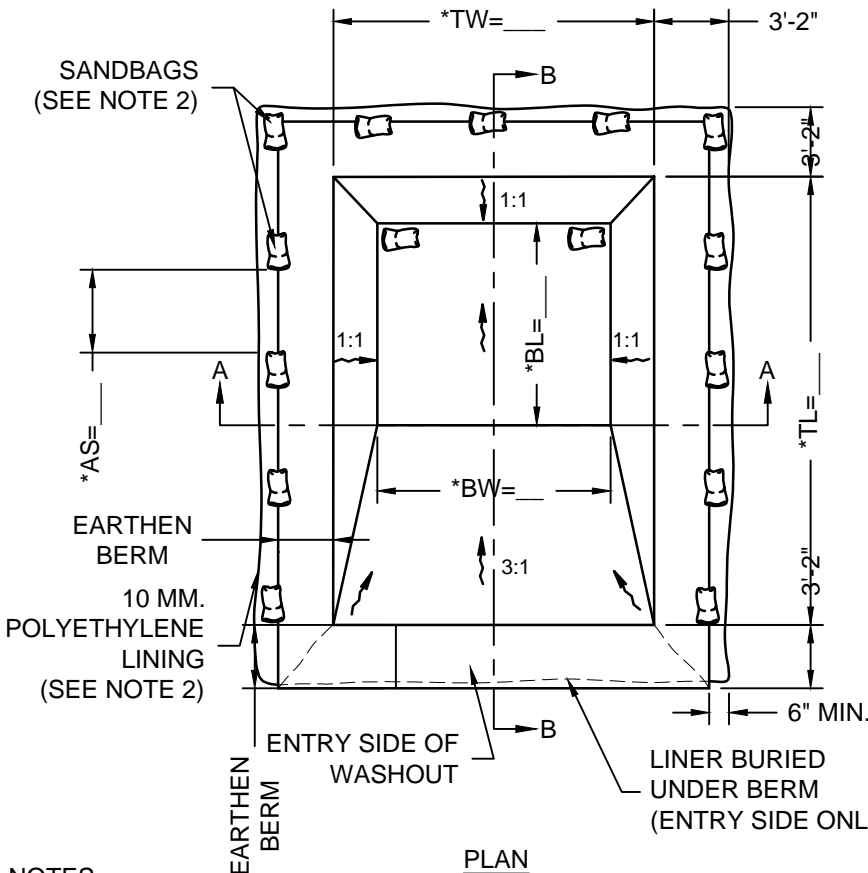
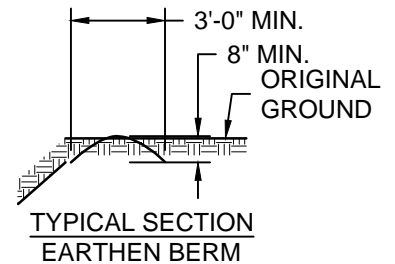
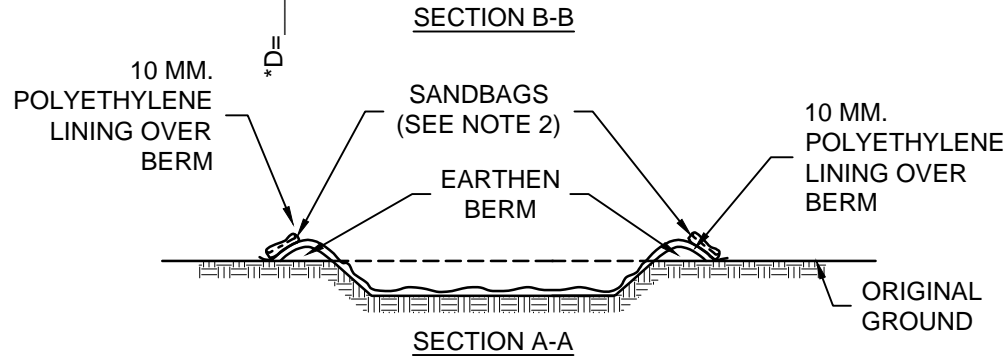
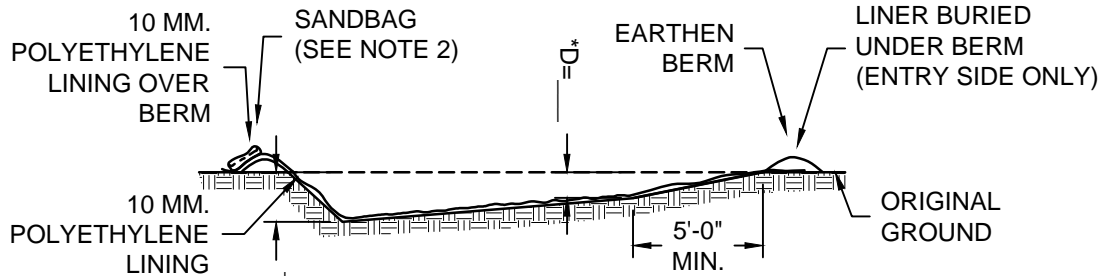


# CONCRETE WASHOUT - BELOW GRADE

Created: December 1, 2011

Revised: January 24, 2017

Scale: N.T.S.



**ABBREVIATIONS:**

- \*AS = ANCHORING SYSTEM MIN. SPACING
- \*BL = BOTTOM LENGTH OF EXCAVATION
- \*BW = BOTTOM WIDTH OF EXCAVATION
- \*D = DEPTH OF EXCAVATION
- \*TL = TOP LENGTH OF EXCAVATION
- \*TW = TOP WIDTH OF EXCAVATION

**NOTES:**

1. THE CONCRETE WASHOUT SIGN SHALL BE INSTALLED WITHIN 10 FT. OF THE TEMPORARY CONCRETE WASHOUT UNIT.
2. THE POLYETHYLENE LINER SHALL BE ANCHORED WITH SAND BAGS OR OTHER APPROPRIATE ANCHORING SYSTEM.
3. PREFABRICATED WASHOUT SYSTEMS MAY BE USED WITH PRIOR APPROVAL FROM PROJECT ENGINEER.
4. THE SYMBOL "\*" INDICATES A DIMENSION THAT IS TO BE DESIGNED BASED ON EXPECTED QUANTITY OF MATERIALS