

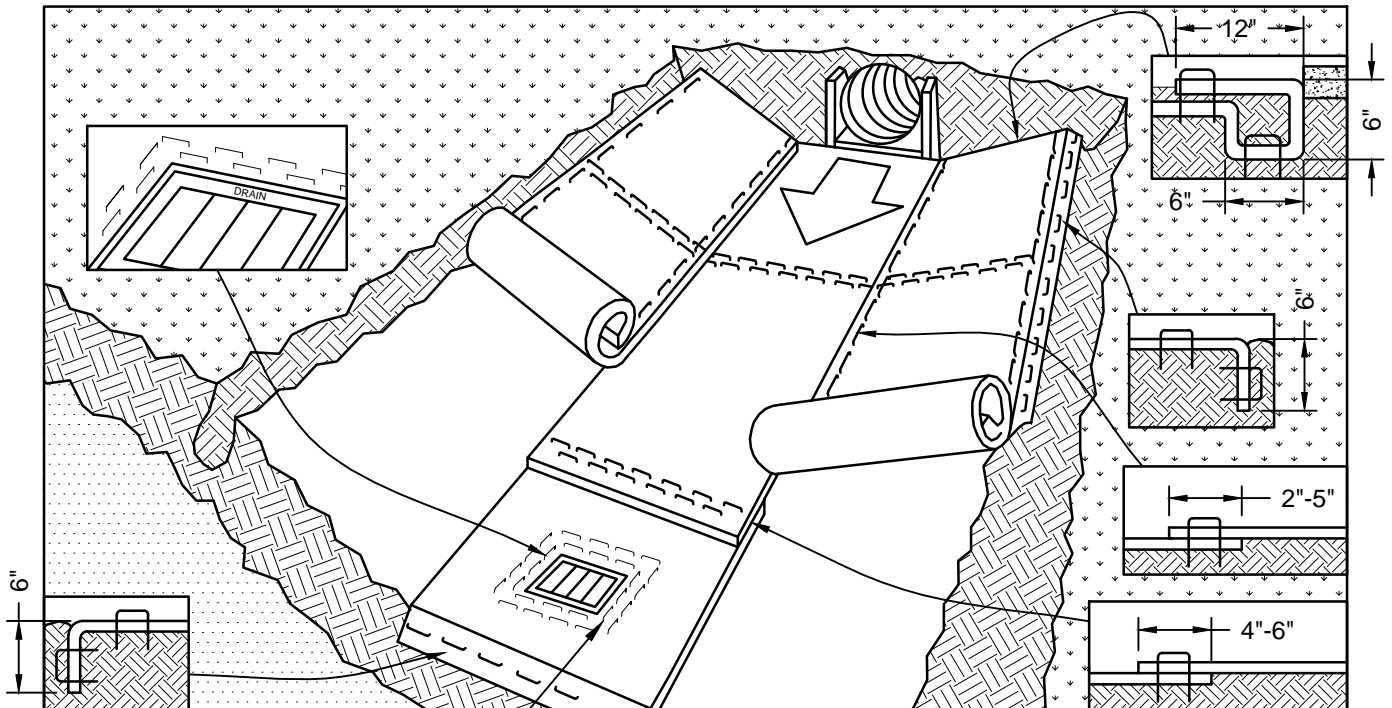
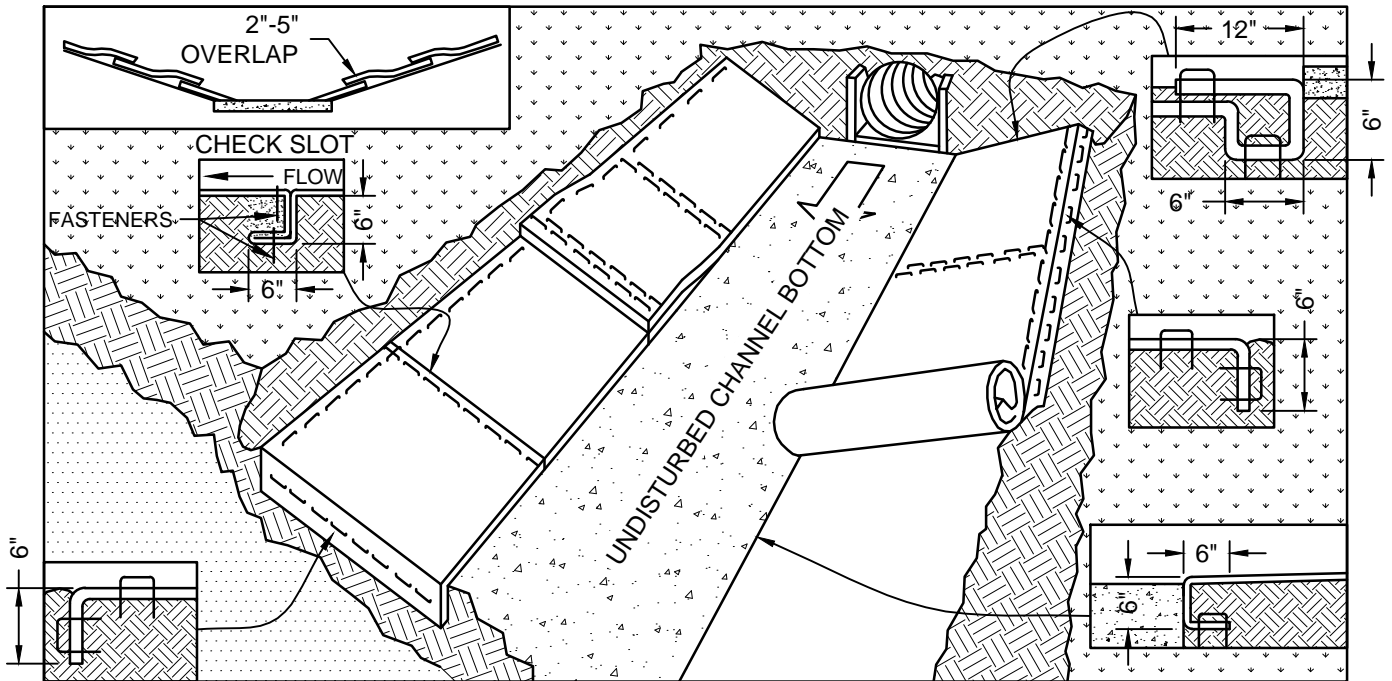


# EROSION CONTROL BLANKETS CHANNEL

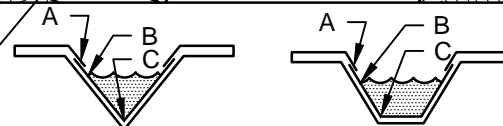
Created: January 31, 2012

Revised: October 30, 2015

Scale: N.T.S.



SECURE FABRIC AROUND INLET PER MANUFACTURER'S RECOMMENDATIONS



**CRITICAL POINTS**

- A. OVERLAPS AND SEAMS
- B. PROJECTED WATER LINE
- C. CHANNEL BOTTOM/SIDE SLOPE VERTICES

**NOTES:**

1. ROLL CENTER BLANKET IN DIRECTION OF WATER FLOW IN BOTTOM OF CHANNEL.
2. IN HIGH FLOW CHANNEL APPLICATIONS, A STAPLE CHECK SLOT IS RECOMMENDED AT 30 TO 40 FOOT INTERVALS.
3. HORIZONTAL STAPLE SPACING SHOULD BE ALTERED IF NECESSARY TO ALLOW STAPLES TO SECURE THE CRITICAL POINTS ALONG THE CHANNEL SURFACE.
4. IN LOOSE SOIL CONDITIONS, THE USE OF LONGER STAPLES MAY BE NECESSARY TO PROPERLY ANCHOR THE BLANKETS.