

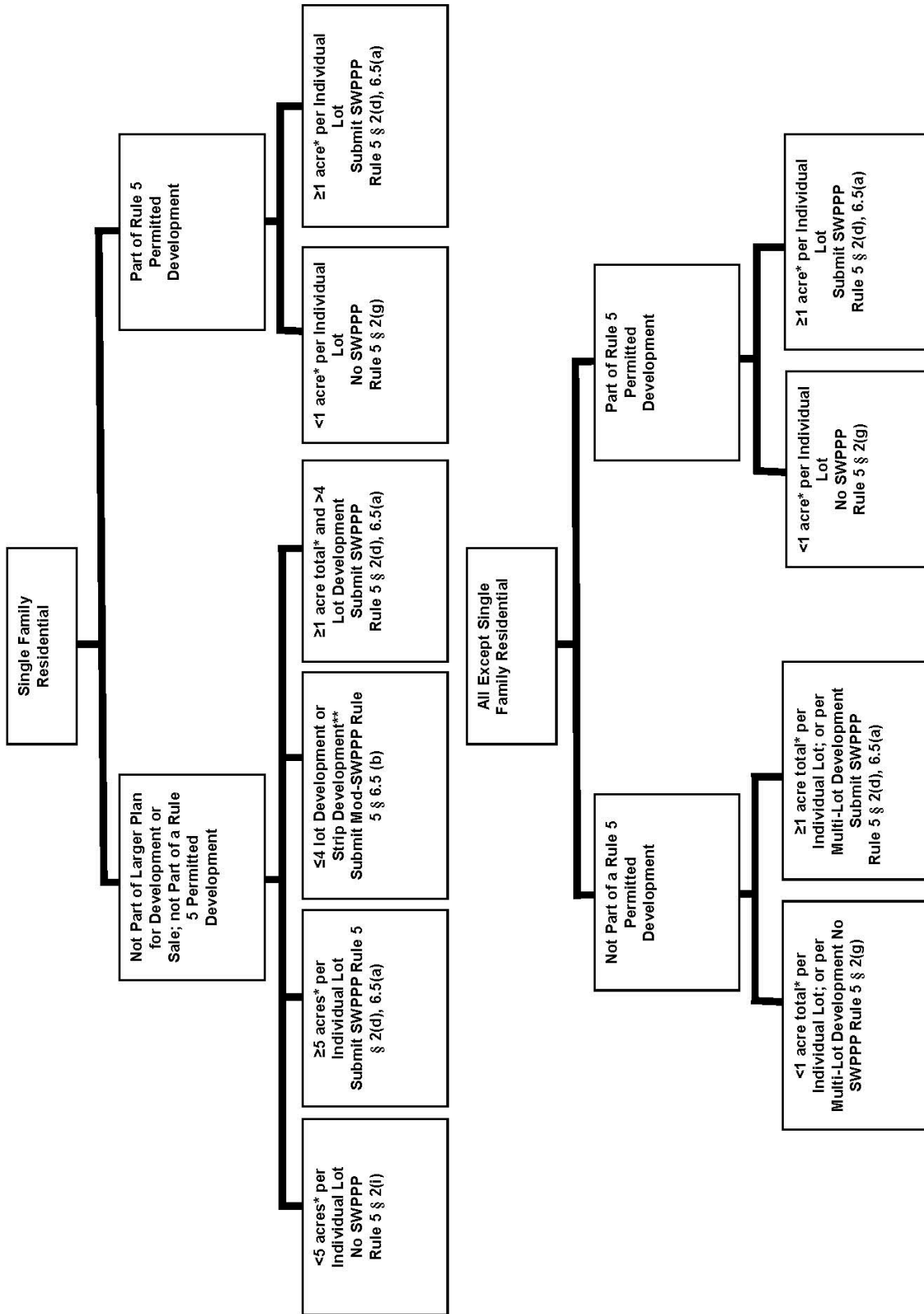


**City Utilities  
Design Standard  
Manual**

Exhibit SW12-1  
Submittal Requirements under Rule 5

Created: May 2012

Revised:



\* Acreage is the actual area of land disturbing activities, except in multi-lot developments, which are calculated per 327 IAC 12-5-2(h)

\*\* "Strip development" means a multi-lot project where building lots front on an existing road (327 IAC 15-5-4(37))