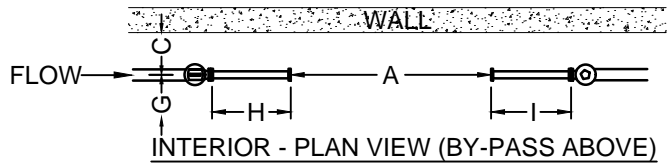
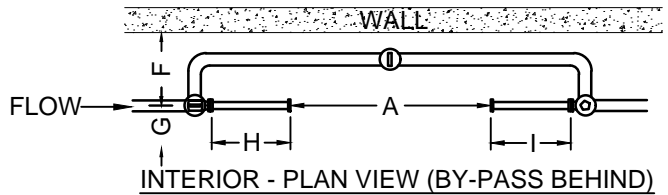


INTERIOR - SECTION VIEW



INTERIOR - PLAN VIEW (BY-PASS ABOVE)



INTERIOR - PLAN VIEW (BY-PASS BEHIND)

Required Flange Fittings	
Meter Size	Required Flange
1 1/2"	(2) bolt flange on each side of meter set
2"	(2) bolt flange on each side of meter set
3"	(4) bolt flange on each side of meter set
4" thru 8"	(8) bolt flange on each side of meter set
10"	(12) bolt flange on each side of meter set

- A = MINIMUM AND MAXIMUM DISTANCE FACE TO FACE OF FLANGED VALVES OR FLANGED FITTINGS
- B = MINIMUM AND MAXIMUM DISTANCE FROM ϵ OF PIPING TO FLOOR OR OBSTRUCTION BELOW METER.
- C = MINIMUM DISTANCE FROM ϵ OF PIPING TO WALL OR OBSTRUCTION BEHIND METER, WHEN BY-PASS IS INSTALLED ABOVE METER.
- D = MINIMUM DISTANCE FROM ϵ OF PIPING TO CEILING OR PERMANENT OBSTRUCTION ABOVE METER.
- E = MINIMUM DISTANCE FROM ϵ OF PIPING TO ϵ OF BY-PASS, WHEN BY-PASS IS INSTALLED ABOVE METER.
- F = MINIMUM DISTANCE FROM ϵ OF PIPING TO WALL, WHEN BY-PASS IS INSTALLED BEHIND METER.
- G = MINIMUM DISTANCE FROM ϵ OF PIPING TO WALL OR PERMANENT OBSTRUCTION IN FRONT OF METER.
- H = MINIMUM OF FIVE TIMES THE DIAMETER OF STRAIGHT PIPE BEFORE THE METER (NOT INCLUDING THE VALVE).
- I = MINIMUM OF THREE TIMES THE DIAMETER OF STRAIGHT PIPE AFTER THE METER (NOT INCLUDING THE VALVE).

Pipe Size	Meter Size	A		B		C	D	E	F	G	H	I
1 1/2"	1 1/2"	13 1/4" MIN.	13 3/8" MAX	15" MIN.	45" MAX	11 1/2"	32"	21"	12"	30"	7 1/2"	4 1/2"
2"	2"	17 1/4" MIN. *	17 3/8" MAX *	15" MIN.	34" MAX	12"	39"	28"	13"	30"	10"	6"
3"	3"	17 1/4" MIN.	17 3/8" MAX	16" MIN.	32" MAX	11 1/2"	42"	31"	13 1/2"	30"	15"	9"
4"	4"	14 1/4" MIN.	14 3/8" MAX	17" MIN.	31" MAX	12 1/2"	38"	28"	14"	30"	20"	12"
6"	6"	18 1/4" MIN.	18 3/8" MAX	18" MIN.	29" MAX	14 1/2"	42"	32"	16 1/2"	32"	30"	18"
8"	8"	20 1/4" MIN.	20 3/8" MAX	20" MIN.	29" MAX	16 1/2"	47"	38"			40"	24"
10"	10"	18 1/4" MIN.	18 3/8" MAX	22" MIN.	28" MAX	19 1/2"	51"	43"			50"	30"

NOTES:

1. NO OBSTRUCTION SHALL BE PLACED IN FRONT OF METER WHICH CANNOT BE READILY MOVED FOR READING, REPAIR OR REPLACEMENT OF METER.
2. ALL METERS SHALL BE INSTALLED IN A HORIZONTAL POSITION.
3. METER SHALL BE LOCATED SUCH THAT IT WILL NOT BE SUBJECTED TO FREEZING OR EXCESSIVE HEAT.
4. ALL VALVES 3" AND LARGER SHALL BE GATE VALVES. GATE OR BALL VALVES MAY BE USED FOR 1 1/2" AND 2" METERS.
* THE FOLLOWING ALTERNATE LAY LENGTHS MAY BE USED IF PRE-APPROVED BY CITY UTILITIES FOR 2" METERS (15 1/2" MIN. AND 15 5/8" MAX. OR 10 1/4" MIN. AND 10 3/8" MAX.)