



PRECAST 33" ROUND INLET

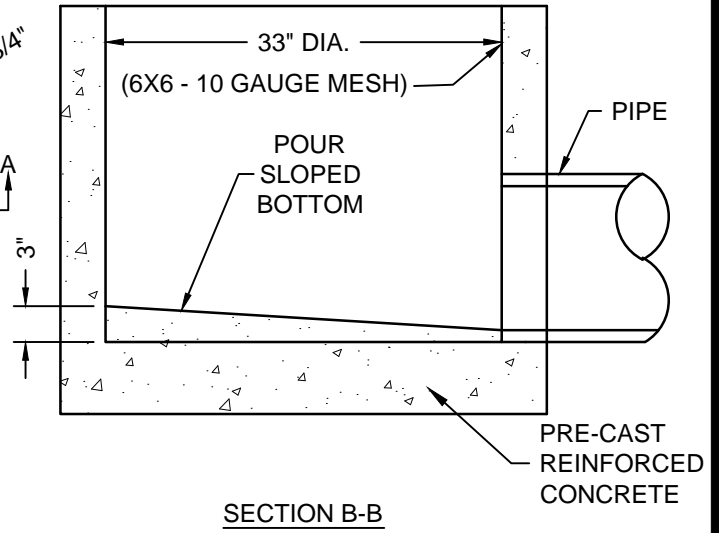
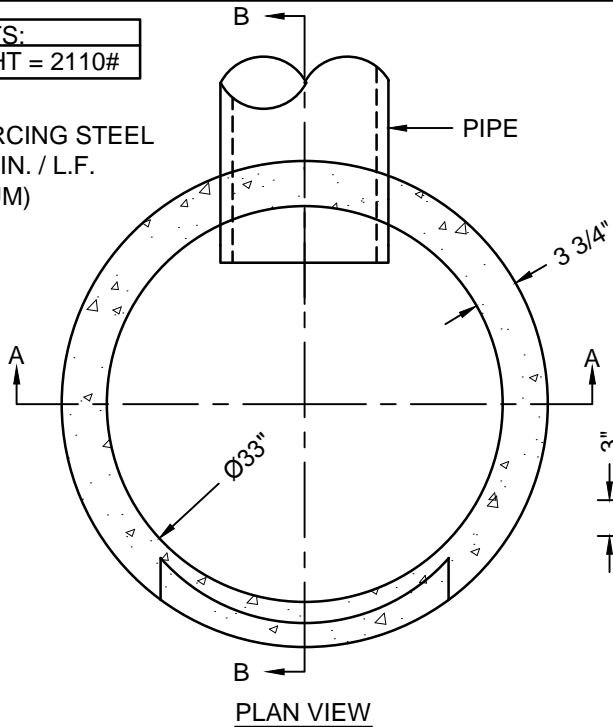
Created: July 28, 2010

Revised: November 20, 2015

Scale: N.T.S.

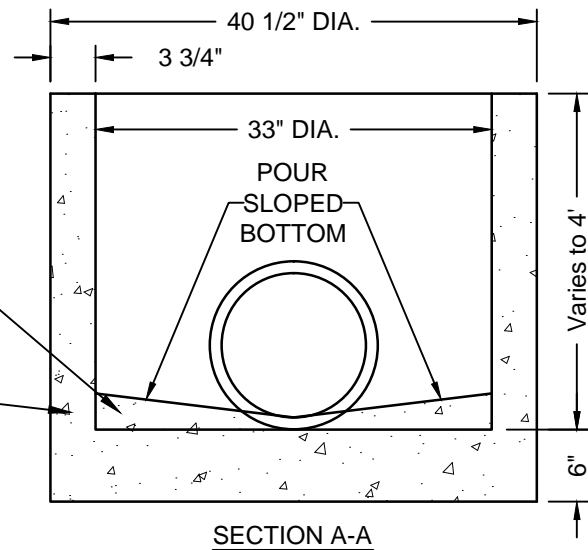
WEIGHTS:
4' HEIGHT = 2110#

NOTE:
REINFORCING STEEL
0.12 SQ. IN. / L.F.
(MAXIMUM)



INLETS WITH INCOMING PIPES SHALL HAVE BENCHES UP TO THE CROWN OF THE PIPE (SEE POURED CHANNEL SHAPES I DETAIL AND POURED CHANNEL SHAPES II DETAIL FOR CHANNEL REQUIREMENTS)

PRE-CAST REINFORCED CONCRETE



NOTES:

1. ALL CONCRETE TO BE A MINIMUM OF 4500 PSI @ 28 DAYS.
2. MANUFACTURED IN ACCORDANCE WITH ASTM C-478 AND INDOT SPEC. 907.04.
3. MANHOLE JOINTS TO BE TONGUE AND GROOVE WITH BUTYL RUBBER SEALANT OR O'RING PER ASTM C-443.
4. LIFTING HOLES REQUIRE PLUGGING BEFORE TESTING.
5. PIPE CONNECTIONS AVAILABLE ARE PSX BOOTS, A-LOK OR NON-SHRINK GROUT BY CONTRACTOR.
6. PRE-POURED INVERTS ARE AVAILABLE ON REQUEST.
7. ALL REINFORCING STEEL MEETS OR EXCEEDS ASTM C-478.
8. BASE SECTION COMES STANDARD WITH 6" MONOLITHIC BASE. SEPARATE BASE AND FLAT TOP IS AVAILABLE ON REQUEST. BASE SECTION IS TO BE SET PER JOB SPECIFICATIONS.
9. CONTRACTOR SHALL POUR SLOPED CONCRETE BOTTOM TO ALLOW ADEQUATE DRAINAGE IN INLET.
10. THE CASTING TO BE USED WITH THIS INLET SHALL BE A 33" ROUND CURB & GUTTER W/ADJUSTING RING FOR SUPPORT OF CASTING OR OTHER PRE-APPROVED CASTING AS NOTED ON THE PROJECT DETAIL SHEET(S).