



30" X 46" INLET

Created: May 22, 2017

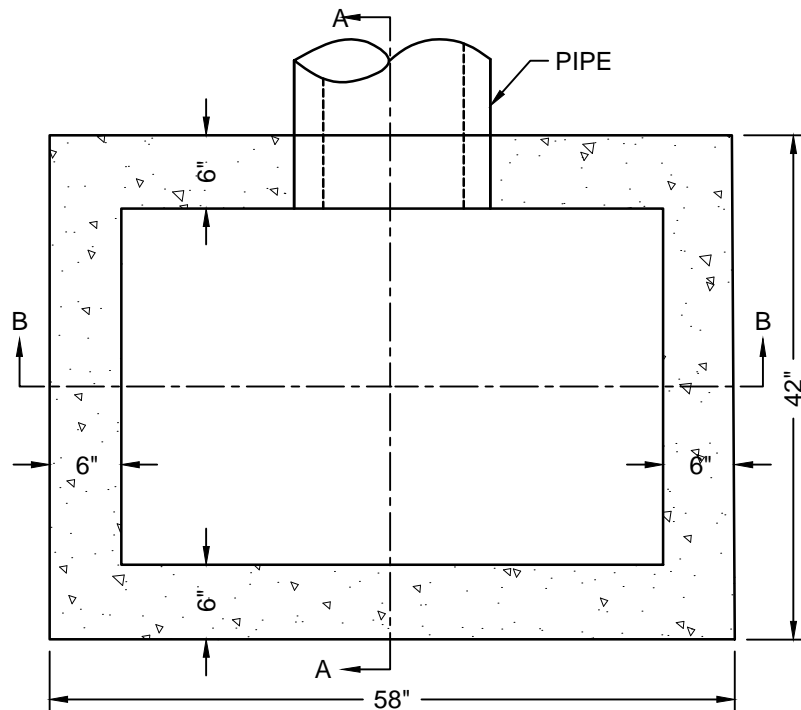
Revised: February 26, 2018

Scale: N.T.S.

PIPE CONNECTION NOTES:

INLET AND OUTLET PIPES SHALL EXTEND THROUGH THE BOX INLET WALLS A SUFFICIENT DISTANCE TO ALLOW FOR PLACEMENT OF GROUTING MATERIAL AROUND THE PIPE DIAMETER BOTH INSIDE AND OUTSIDE OF THE STRUCTURE WALL, PREVENTING LEAKAGE AROUND THE PIPES OUTER SURFACE. INLET AND OUTLET PIPES SHALL NOT EXTEND THROUGH THE INLET OR MANHOLE WALL TO SUCH A DEGREE THAT FLOW IS OBSTRUCTED.

HOLES FOR CONNECTIONS OF STORM SEWER PIPES SHALL BE PREFORMED BY THE MANUFACTURER, OR FIELD CUT OR DRILLED. AT NO TIME SHALL THE PIPE HOLE EXCEED THE OUTER PIPE DIAMETERS PLUS FOUR-INCHES (O.D. +4"), TO ENSURE A PROPER CONNECTION IS ACHIEVED. SHOULD THE CONTRACTOR ELECT TO USE BOX INLET STRUCTURES WITH PREFORMED THIN WALL "KNOCK-OUTS", THE BALANCE OF THE "KNOCK OUT" AREA NOT OCCUPIED BY THE PIPE CONNECTION AND ALL REMAINING UNUSED "KNOCK-OUTS" SHALL BE FILLED WITH 4000 PSI CLASS A CONCRETE TO A FINISHED WALL THICKNESS NOT LESS THAN REQUIRED BY THESE STANDARDS.

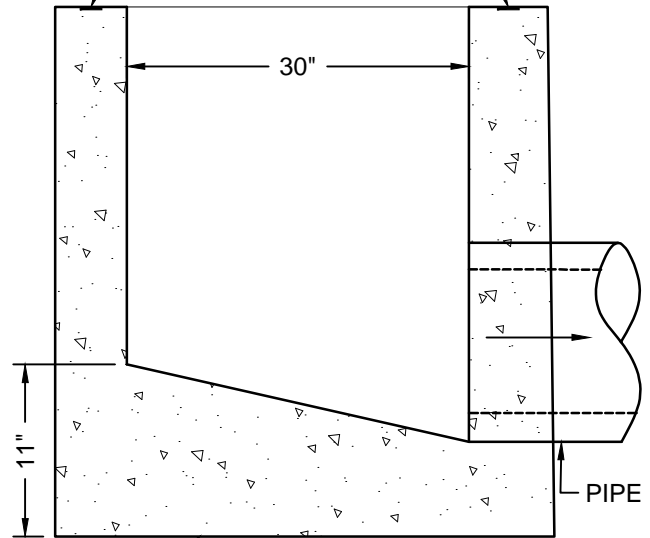
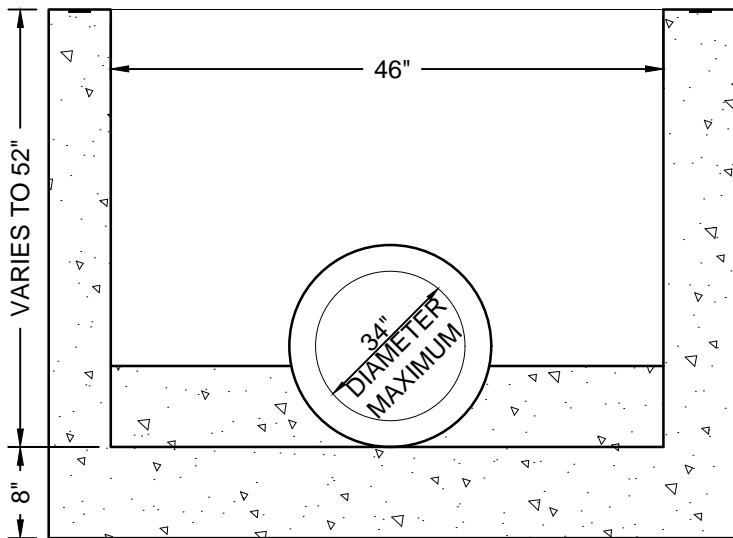


THE ANNULAR SPACE BETWEEN THE PIPE AND THE BOX INLET WALL SHALL BE FILLED INSIDE AND OUTSIDE WITH A GROUT MIXTURE COMPOSED OF 2 PARTS OF NO. 23 FINE AGGREGATE AND ONE PART PORTLAND CEMENT. AS AN ALTERNATIVE, PIPE CONNECTIONS TO BOX INLET UTILIZING AN APPROVED RUBBER GASKET MANUFACTURED AND INSTALLED IN ACCORDANCE WITH ASTM C-923 WILL BE ACCEPTED

NOTE:

1. REINFORCING STEEL AS PER INDOT SPECIFICATIONS.
2. MINIMUM 4500 PSI CONCRETE
3. INDOT "B" OR "C" PER INDOT SPEC. 907.04

MASTIC TYPE SEALANT
1/2" MINIMUM THICKNESS
AND 4" MINIMUM WIDTH



SECTION B-B

POURED REINFORCED
CONCRETE BASE

SECTION A-A