

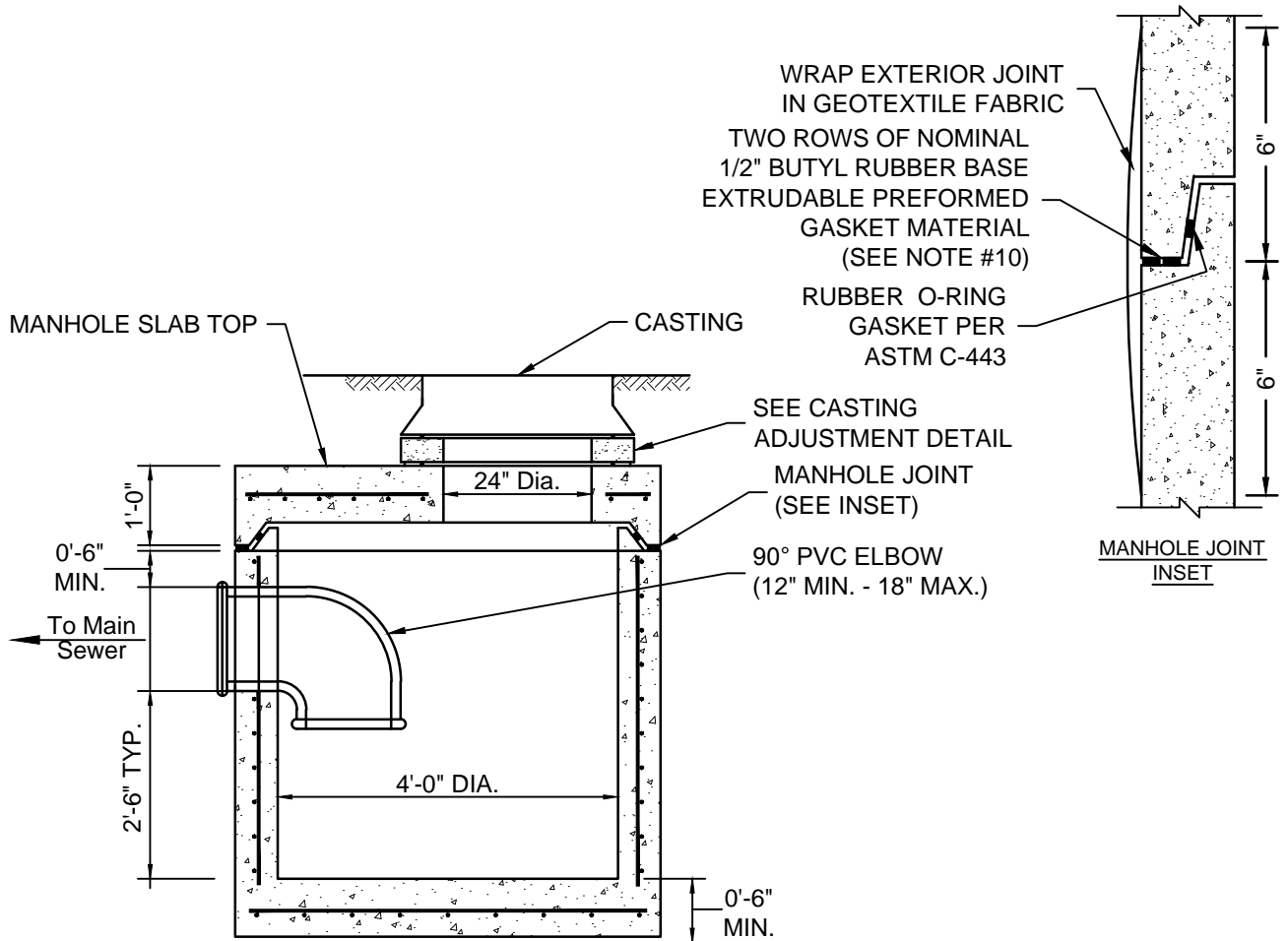


48" CATCH BASIN

Created: January 1, 2002

Revised: October 23, 2015

Scale: N.T.S.



NOTES:

1. GENERAL CONSTRUCTION REQUIREMENTS SAME AS 48" STORM MANHOLE.
2. FOR ALTERNATE CAST-IN-PLACE BASE, SEE CAST-IN-PLACE BASE 48" AND LESS DETAIL.
3. THE BASE SHALL BE PLACED ON COMPACTED FRACTURED FACE STONE, 6" MINIMUM.
4. THE INSIDE WALL DISTANCE BETWEEN OPENINGS SHALL BE A MINIMUM OF 6".
5. REINFORCING STEEL PER ASTM C-890
6. THE CASTING TO BE USED SHALL BE A 24" BEEHIVE, 24" STORM OR OTHER PRE-APPROVED CASTING AS NOTED ON THE PROJECT DETAIL SHEET(S).
7. INLET AND OUTLET PIPES SHALL EXTEND THROUGH WALLS A SUFFICIENT DISTANCE TO ALLOW FOR PLACEMENT OF GROUTING MATERIAL AROUND THE PIPE DIAMETER BOTH INSIDE AND OUTSIDE OF THE STRUCTURE WALL, PREVENTING LEAKAGE AROUND THE PIPES OUTER SURFACE. INLET AND OUTLET PIPES SHALL NOT EXTEND THROUGH THE WALL TO SUCH A DEGREE THAT FLOW IS OBSTRUCTED.
8. HOLES FOR CONNECTIONS OF STORM SEWER PIPES SHALL BE PREFORMED BY THE MANUFACTURER, OR FIELD CUT OR DRILLED. AT NO TIME SHALL THE PIPE HOLE EXCEED THE OUTER PIPE DIAMETER PLUS FOUR-INCHES (O.D. + 4"), TO ENSURE A PROPER CONNECTION IS ACHIEVED. SHOULD THE CONTRACTOR ELECT TO USE STRUCTURES WITH PREFORMED THIN WALL "KNOCK-OUTS", THE BALANCE OF THE "KNOCK-OUT" AREA NOT OCCUPIED BY THE PIPE CONNECTION AND ALL REMAINING UNUSED "KNOCK-OUTS" SHALL BE FILLED WITH 4000 PSI CLASS A CONCRETE TO A FINISHED WALL THICKNESS NOT LESS THAN REQUIRED BY THESE STANDARDS.
9. THE ANNULAR SPACE BETWEEN THE PIPE AND THE STRUCTURE WALL SHALL BE FILLED INSIDE AND OUTSIDE WITH A GROUT MIXTURE COMPOSED OF 2 PARTS OF NO. 23 FINE AGGREGATE AND ONE PART PORTLAND CEMENT. AS AN ALTERNATIVE, PIPE CONNECTIONS UTILIZING AN APPROVED RUBBER GASKET MANUFACTURED AND INSTALLED IN ACCORDANCE WITH ASTM C 923 WILL BE ACCEPTED.
10. USE RU 106 RUB'NEK LTM AS MANUFACTURED BY HENRY CO., KENT-SEAL NO. 2 AS MANUFACTURED BY HAMILTON-KENT OR EZ-STICK BUTYL-RUBBER-BASED PREFORMED FLEXIBLE SEALANT AS MANUFACTURED BY PRESS-SEAL.