



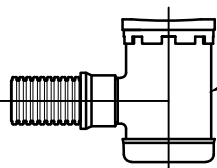
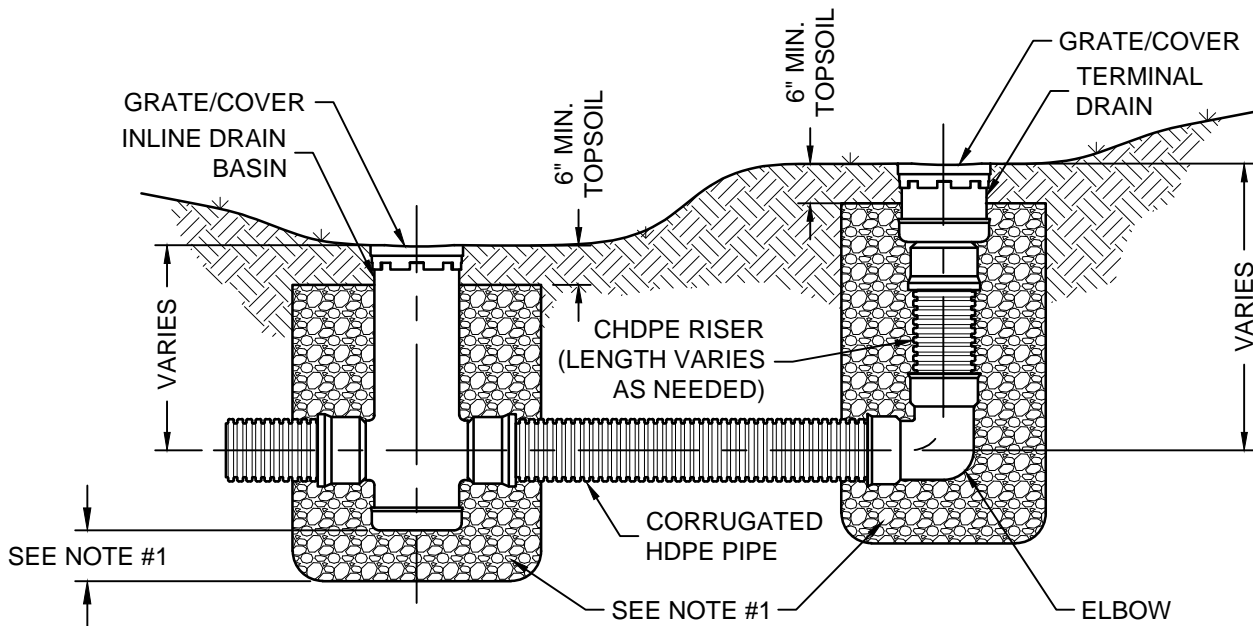
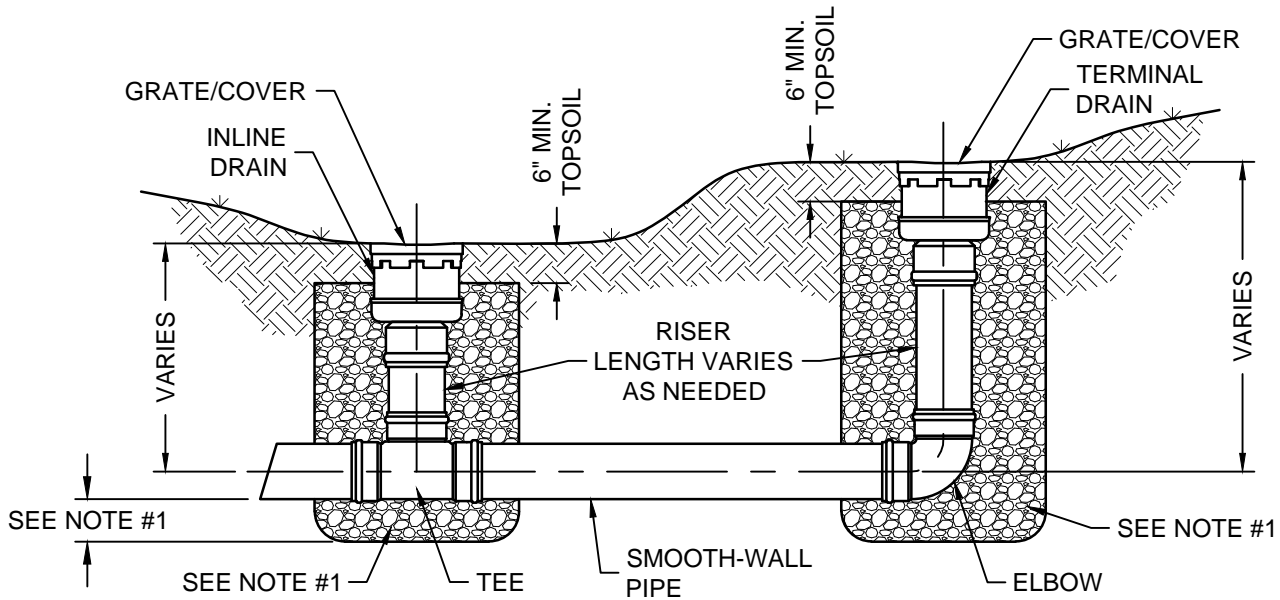
INLINE DRAIN BASIN & TERMINAL DRAIN NON-TRAFFIC INSTALLATION

Created: May 22, 2015

Revised: October 14, 2015

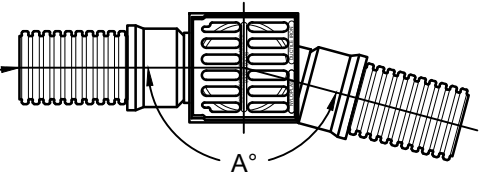
Scale: N.T.S.

Approved: May 22, 2015



INLINE DRAIN BASIN
FOR SHALLOW
APPLICATIONS

INLINE DRAIN BASIN
WITH DIRECTION
CHANGE



NOTES:

1. BACKFILL MATERIAL SHALL BE CRUSHED STONE OR OTHER GRANULAR MATERIAL MEETING THE REQUIREMENTS OF CLASS II MATERIAL AS DEFINED IN ASTM D2321, OR AS DIRECTED BY ENGINEER. 4" MINIMUM UNDER 6"-24" DRAINS. 6" MINIMUM UNDER 30" DRAINS.
2. SEE PIPE BEDDING DETAILS FOR PIPE AND CONDUIT BEDDING REQUIREMENTS.
3. FRAMES, GRATES, COVERS, DRAINS, RISERS, ADAPTERS AND FITTINGS BY NYLOPLAST OR EQUIVALENT AS APPROVED BY ENGINEER.