



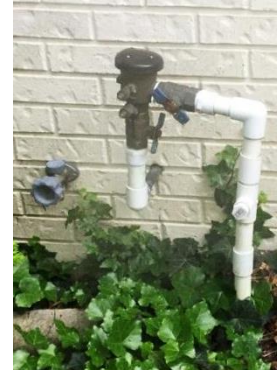
## Disconnecting Irrigation Systems

*Protecting our water from contamination is everyone’s responsibility. Property owners should be aware of their responsibilities associated with having a lawn irrigation system.*



Due to the bacterial and chemical contaminants found on lawns, irrigation systems are considered high hazards with potential to backflow into the public water distribution system. For this reason, these systems must have an approved backflow prevention device installed and tested annually. It is the owner’s responsibility to ensure that cross connections do not exist and that the backflow prevention device is maintained.

Property owners may choose to discontinue using their lawn irrigation system for a variety of reasons, but backflow prevention requirements are still in effect and enforced unless the system is physically disconnected. Simply turning the shut-off valve in the off position does not exclude the property owner from backflow prevention requirements.



### Disconnection Options

1. **Disconnection on Private Line:** The system may be physically disconnected by the property owner on the private line downstream of the City Utilities irrigation water meter. If the property owner chooses to physically disconnect their system, City Utilities recommends consulting with and/or hiring a licensed plumber/contractor or professional irrigation company to ensure the job is getting done right. This option may be ideal if there is additional plumbing supplied by the irrigation water meter, including outdoor garden hose spigots that you intend to continue utilizing. The disconnection must take place downstream of the irrigation water meter. Common products used to cap the line include PVC and copper caps or fittings.



If you are ready to begin the process or have already completed the process of physically disconnecting your lawn irrigation system on the private line, please contact Aqua Backflow at (847) 742-2296 or [Info@AquaBackflow.com](mailto:Info@AquaBackflow.com) to ensure our records are up-to-date.

2. **Disconnection at Water Meter:** The property owner may request City Utilities to remove the irrigation water meter at the incoming supply. Be mindful that this option involves abandoning all plumbing supplied by the irrigation water meter. The irrigation water meter must be removed by City Utilities and not the customer or plumber/irrigation company. Customers will be responsible for having the line cut and capped before meter.

If you would like to request City Utilities to remove the irrigation water meter at the incoming supply, abandoning any plumbing supplied by this meter, please contact City Utilities at 260-427-6123 or [CrossConnectionControl@cityoffortwayne.org](mailto:CrossConnectionControl@cityoffortwayne.org).

\*Please note, a building permit is not required to remove a backflow prevention device and/or physically disconnect a lawn irrigation system.

*This document is a resource for reference, and City Utilities is not liable for unintended consequences on the actions of the property owner. City Utilities is not responsible for the failure to adequately install a cap/plug to a terminated end point, after the supply line is pressurized.*