

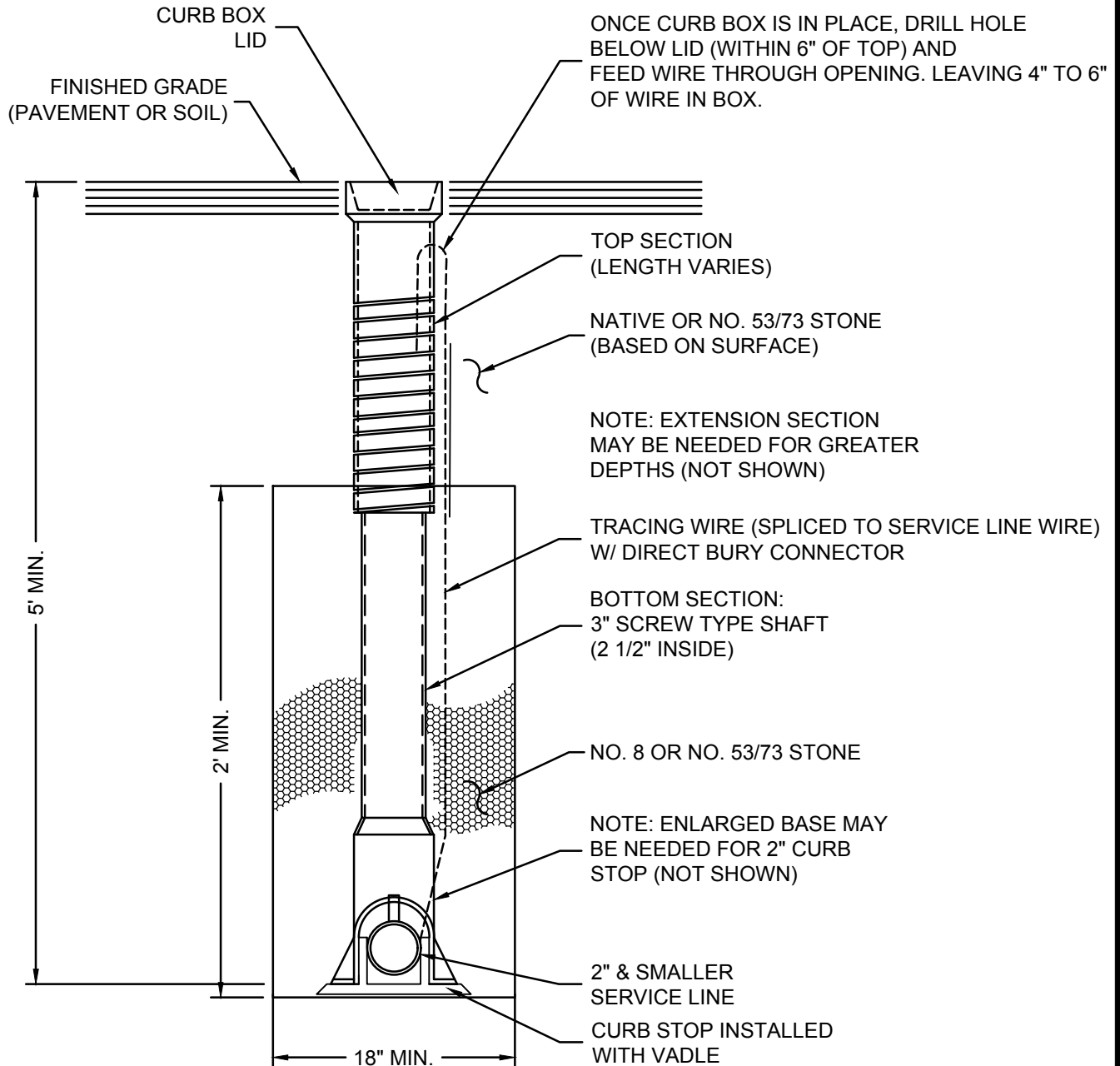


# LOW PRESSURE SEWER CURB BOX

Created: January 1, 2002

Revised: July 6, 2023

Scale: N.T.S.



## NOTES:

1. ALL CURB BOXES SHALL BE CAST IRON, BUFFALO SCREW STYLE WITH THE WORD "SEWER" CAST IN THE LID.
2. CURB BOX SHALL BE A TWO PIECE TYPE WITH A 3" SHAFT SIZE (2 1/2" INSIDE).
3. THE LID SHALL BE HELD IN PLACE BY A STANDARD BRASS PENTAGON HEAD SCREW.
4. TRACING WIRE REQUIRED FOR ALL PIPE.
5. ALL MATERIAL SHALL MEET SEWER UTILITY MATERIAL SPECIFICATIONS.
6. IF CURB BOX LOCATION IS IN THE PAVEMENT, CONTRACTORS SHALL BACKFILL ENTIRE TRENCH DEPTH WITH NO. 53/73 STONE.