

# PROTECTING OUR NEIGHBORHOODS



Foster Park Relief Sewer  
September 12, 2023

# AGENDA



- Understanding your collection system
- Project Objectives/Details
- Anticipated Schedule

# Terminology



- 3RPORT – Three Rivers Protection & Overflow Reduction Tunnel
- CSO – Combined Sewer Overflow or Outfall
- Collection System
- Sanitary Sewer
- Storm Sewer
- Inlet
- Structure (or manhole)

# Problem



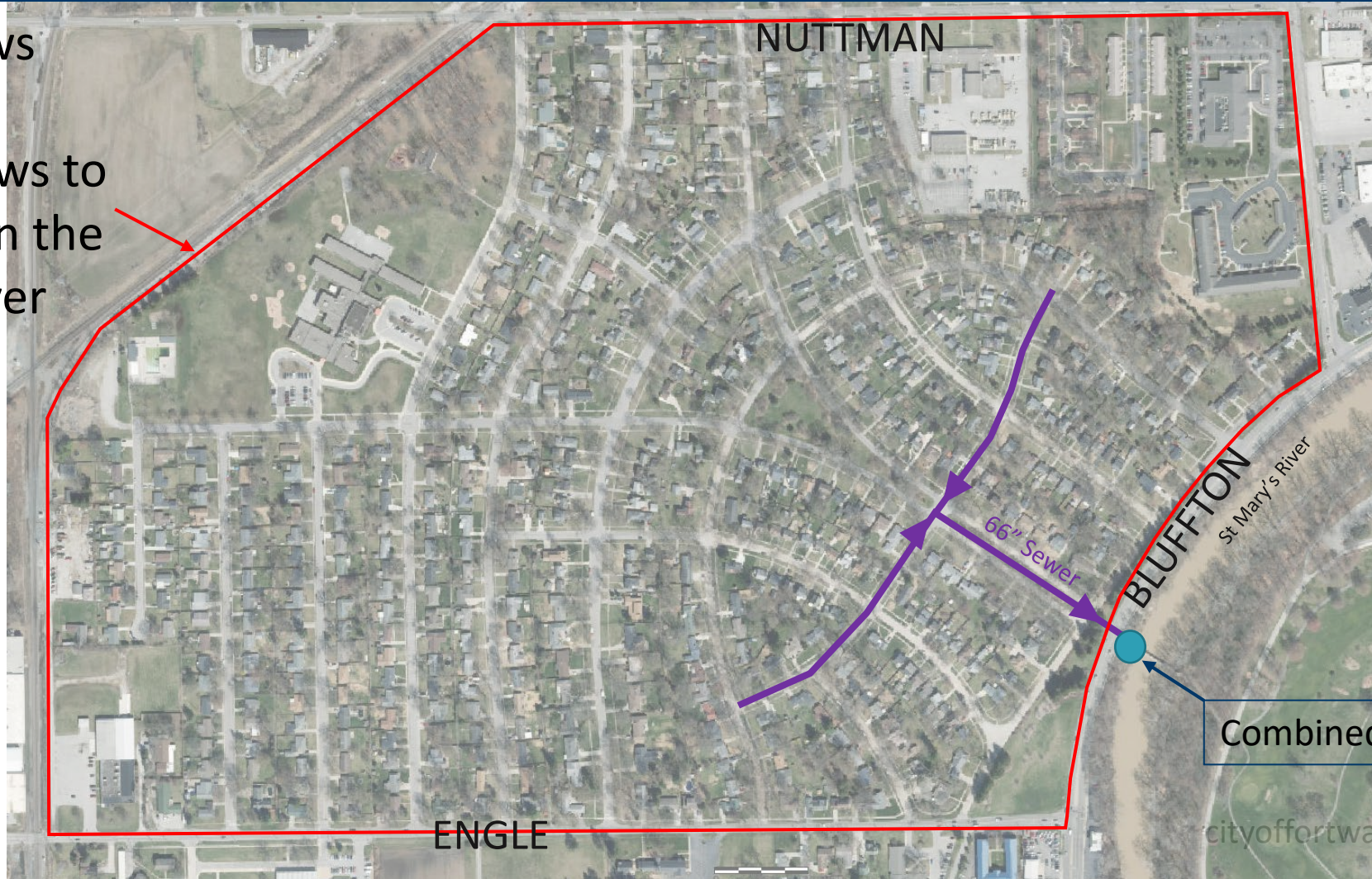
# Problem



# Understanding your collection system



Outline shows area that currently flows to the outfall on the St. Mary's River

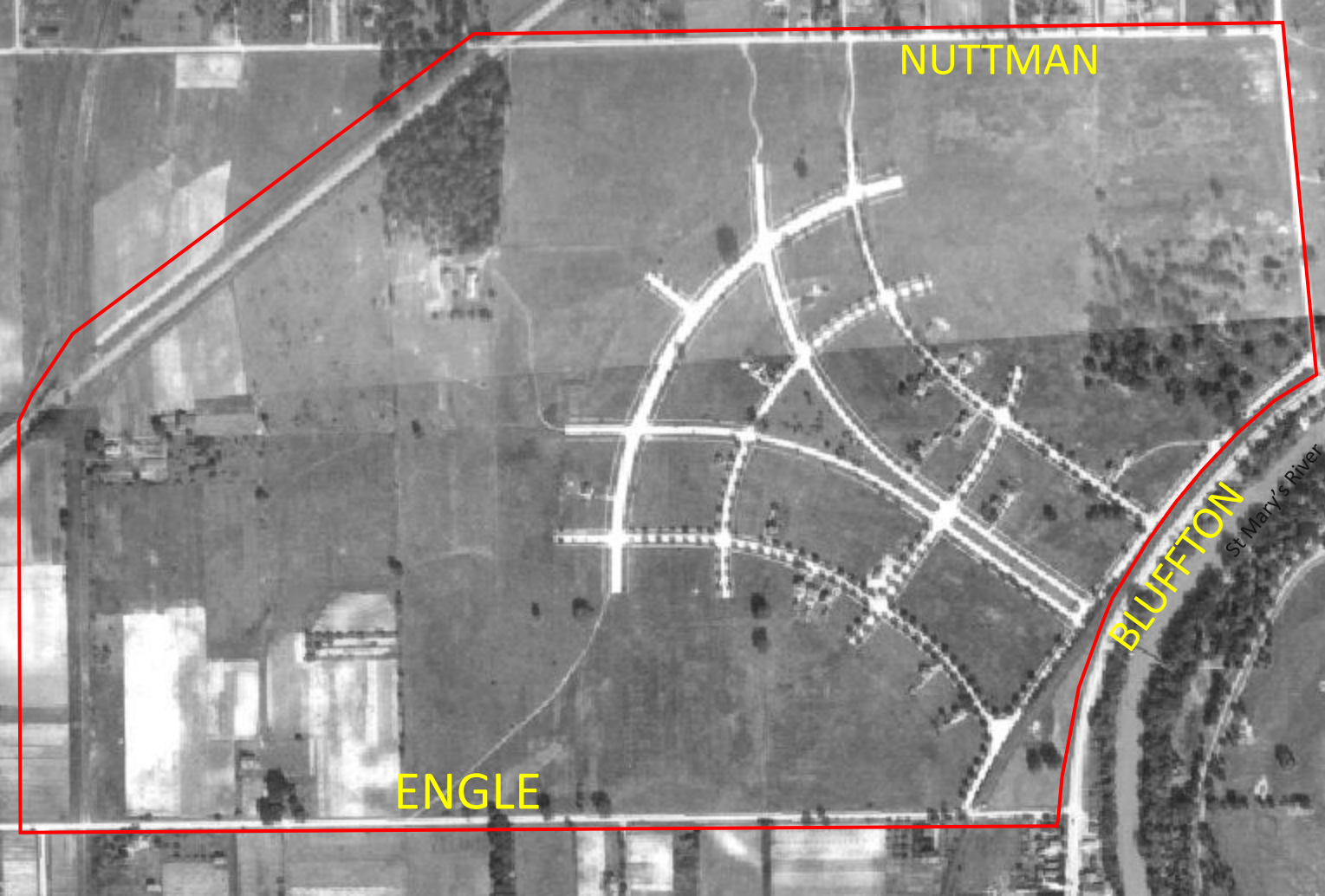


Combined Sewer Overflow

# Understanding your collection system



1938 Aerial



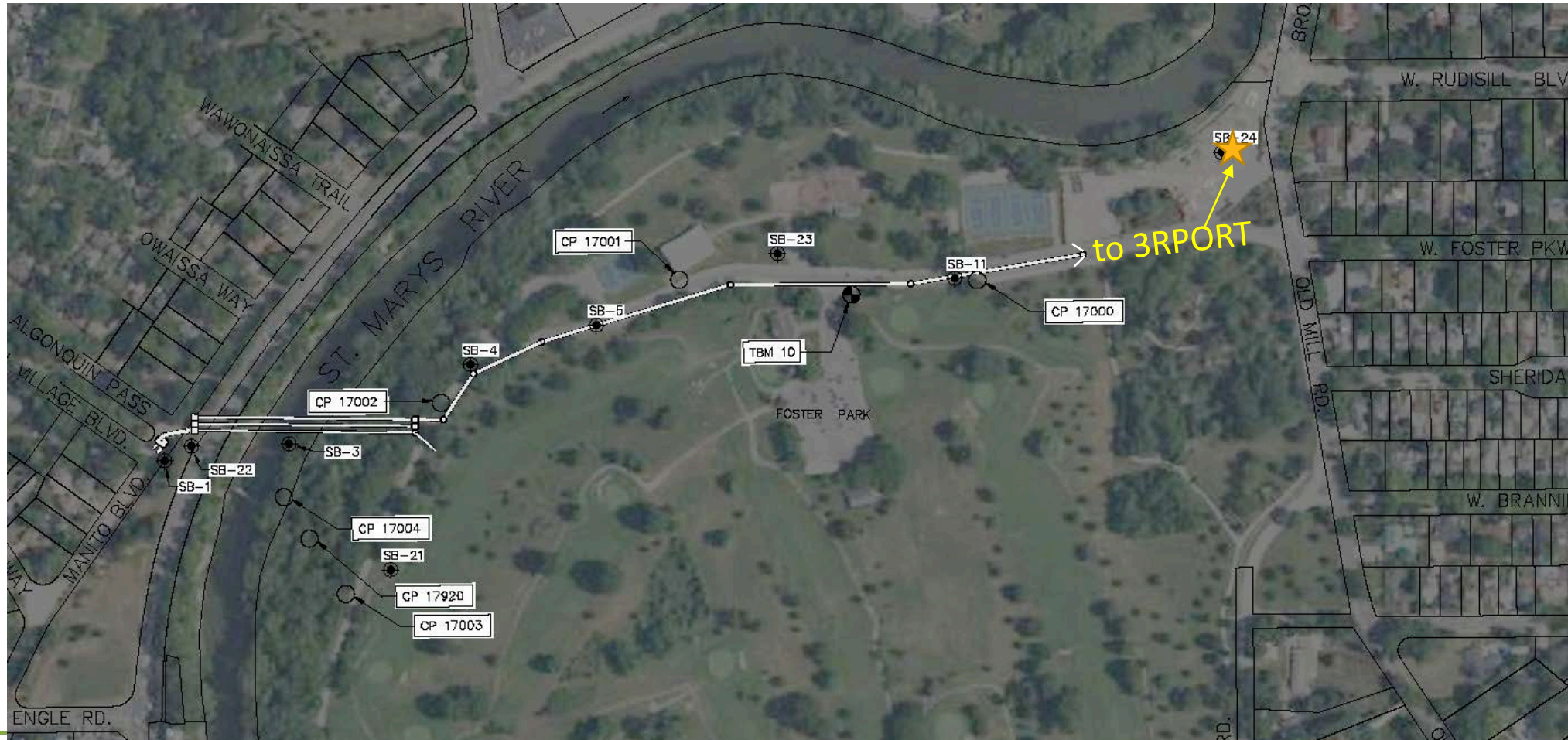
# Understanding your collection system



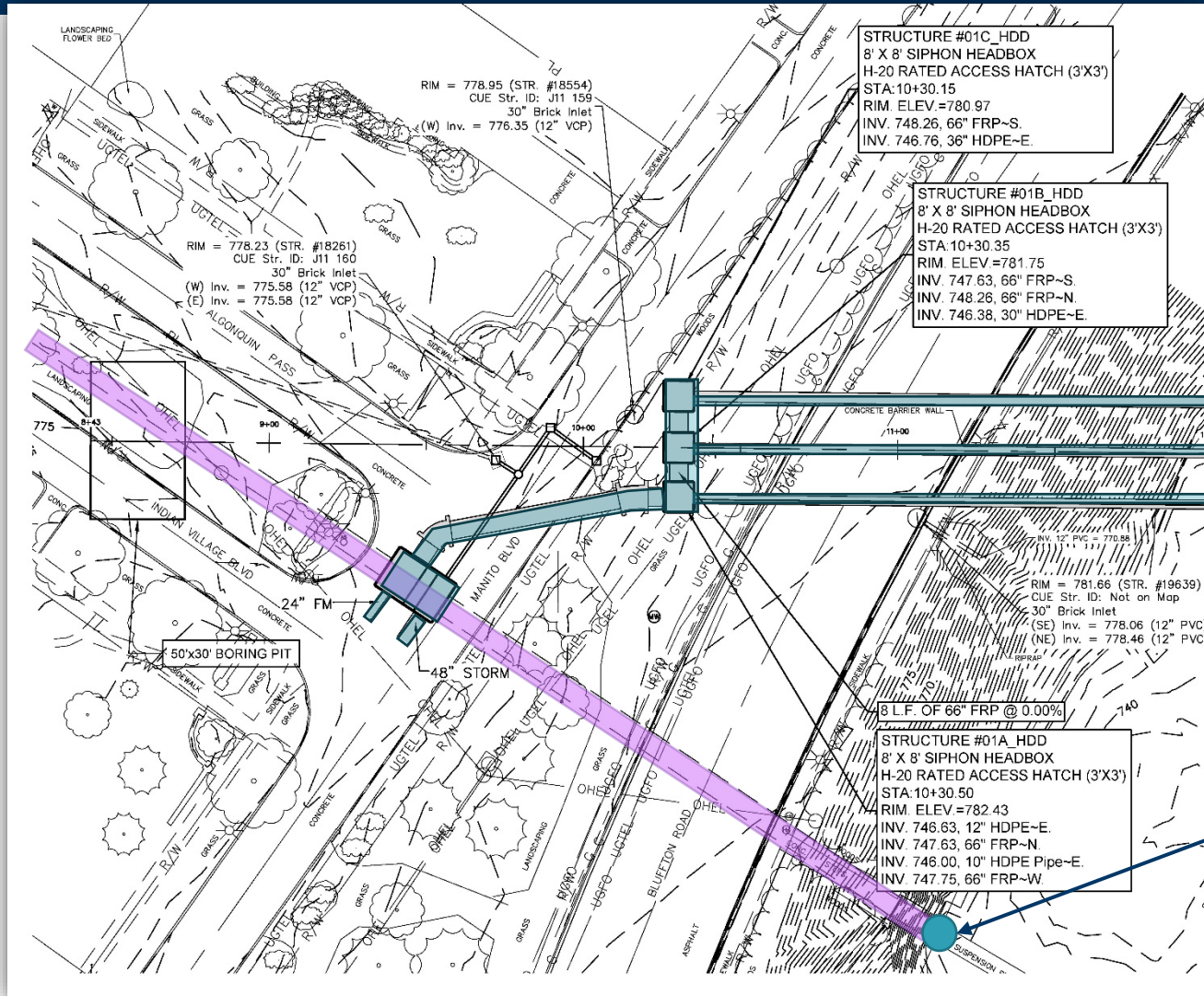
Combined Sewer Overflow



# Upcoming Sewer Project



# Upcoming Sewer Project

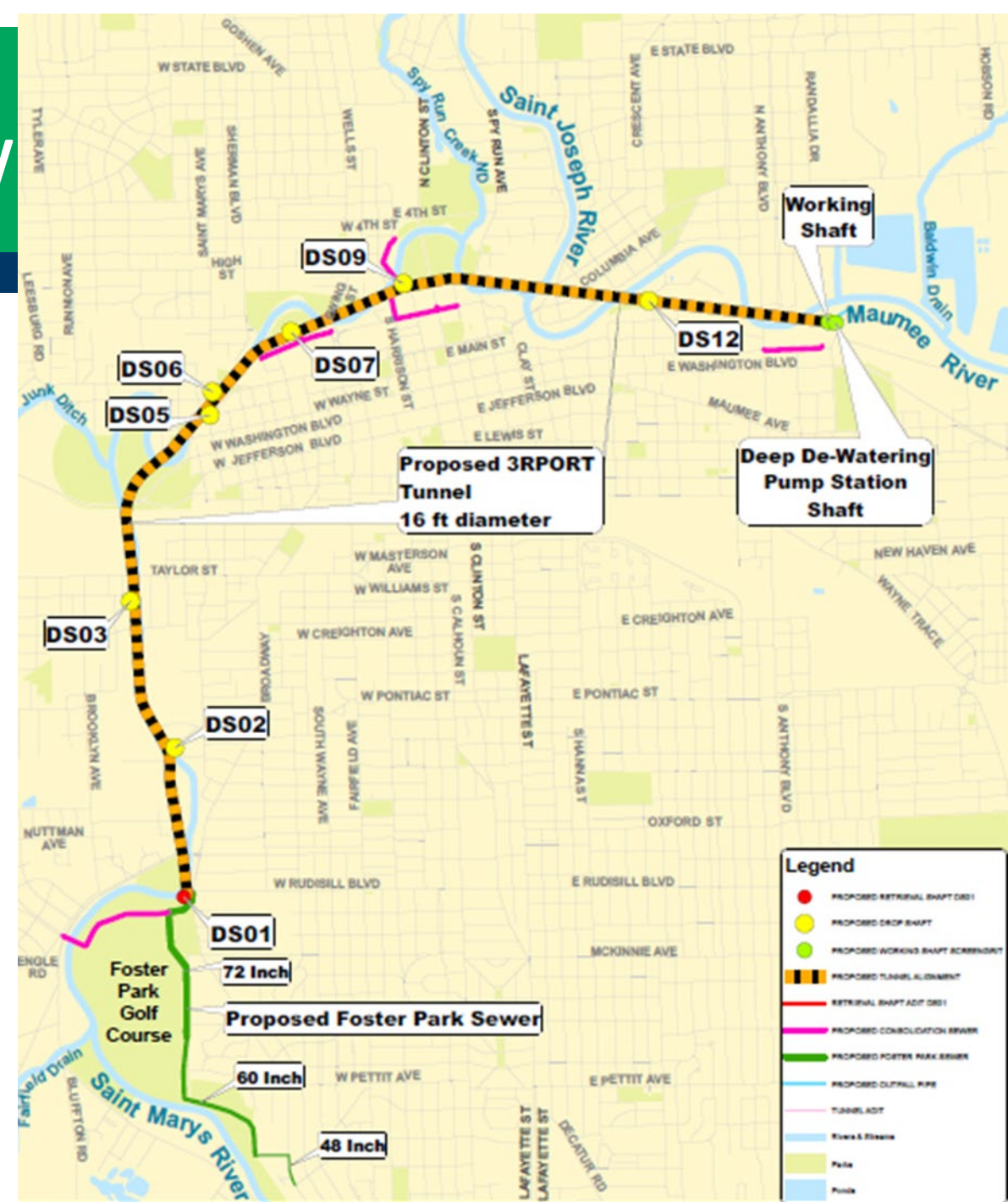


Combined Sewer Overflow

[cityoffortwayne.org/utilities](http://cityoffortwayne.org/utilities)

# Combined Sewer Overflow

- Three Rivers Protection and Overflow Reduction Tunnel (3RPORT)
  - Deep-rock tunnel
  - Drop shafts & adits
- Deep dewatering pump station
- Near surface infrastructure
  - Consolidation sewers – (near surface sewers connecting to the tunnel)



# Remaining Foster Park CSO Reduction Projects



- Part of EPA Long Term Control Plan
  - Reduce average annual overflows
  - Currently approx. 40 events per year or 19.8 Million gallons per year
  - Future average of 4 per year or less than 2 Million gallons per year



# What to expect next



- Meet the contractor meeting (anticipated in January/February)
- Active construction
  - Approx 1 months (total project duration includes portion of sewer in Foster Park)
- System in operation

# Questions & Contact Info



Kristen Buell  
Fort Wayne City Utilities  
427-2583  
[Kristen.Buell@cityoffortwayne.org](mailto:Kristen.Buell@cityoffortwayne.org)



[cityoffortwayne.org/utilities](http://cityoffortwayne.org/utilities)