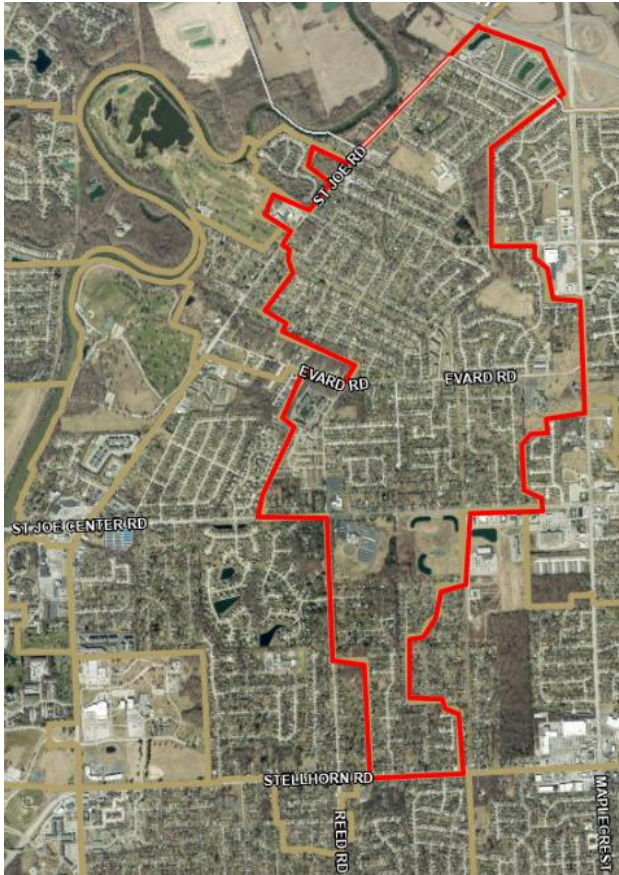


St. Joe Center Rd Force Main Project



Presented by Nathan Baggett, PE
On Behalf of City of Fort Wayne Utilities
August 27, 2025

Project Purpose

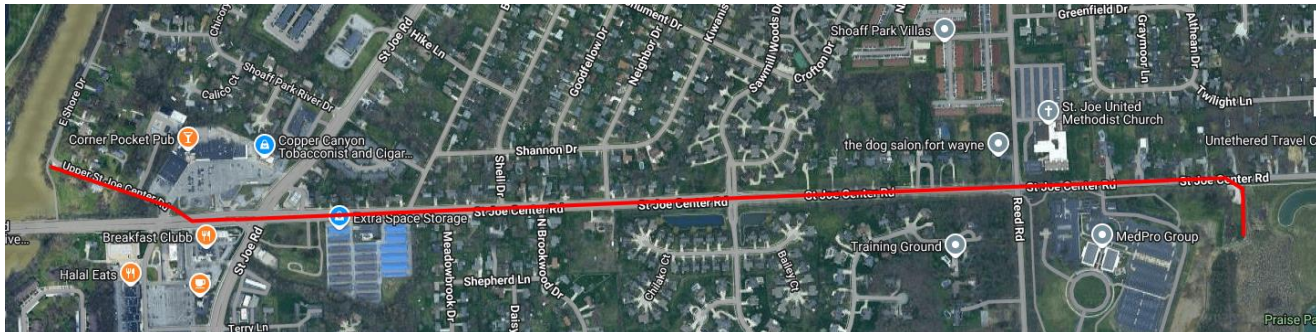


- Convey up to 2 MGD of wet weather sewage from the Rothman area sewer shed to the St. Joe Interceptor to reduce basement backups and sanitary sewer discharges.
- The Rothman Sewer Subbasin is one of the City's largest sheds covering over 1200 ac and serving over 3600 customers.

Project Scope



- Install 8061 LF of 16" HDPE force main under St. Joe Center Rd. from Upper St Joe Rd. at E. Shore Dr. to a proposed lift station located just east of Medical Protective by Horizontal Directional Drilling (HDD)



Horizontal Directional Drilling



- Less Invasive than Typical Excavation Work



Traffic Impacts



- Project will include lane closures and restrictions
- Equipment parked in the road during operations
- Excavation for bore pits
- Bore pits at least every 500 feet

Lane Restrictions and Road Closure Information can be accessed at the Trec The Fort Website Provided in the Link Below.

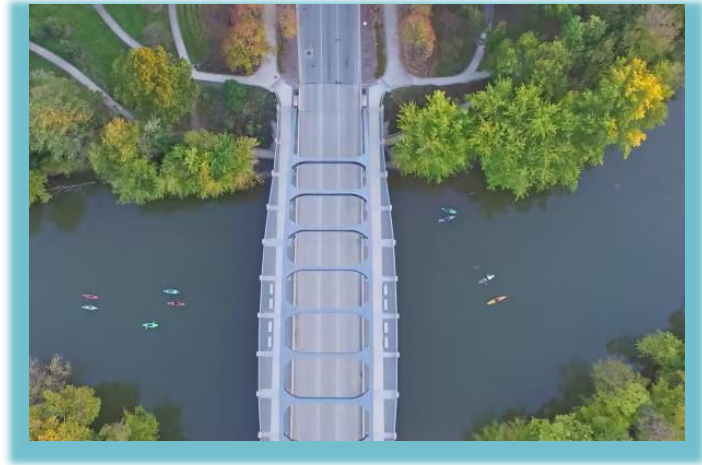
<http://TRECtheFort.org>

Maintenance of Traffic



- West Bound traffic along St. Joe Center will be restricted to one lane at times as construction progresses. At least one lane will be open at all times.
- Intersection of St Joe Center and St Joe Road will remain open throughout.
- Access to Upper St Joe Rd and E Shore Drive will remain open.
- At least one entrance to Parkview Addition and Sunny Meadows will remain open to two way turn traffic.
- Access to Sawmill Woods and Wyndemere will remain open.
- Emergency responders, garbage pick up, and mail delivery services will have access to all properties along the route
- Access to businesses will be kept open to the greatest extent possible

Municipal Storm Water Program Educational Moment



Storm Water Program Goals



Fort Wayne City Utilities is involved in a program designed to clean urban stormwater to protect streams and rivers.

- Educate and inform the public about urban runoff.
- Encourage public participation in community clean-up events.
- Work with industries and businesses to encourage pollution prevention.
- Require all construction projects 1) to be designed to reduce and prevent pollution, 2) to implement good housekeeping practices and 3) to continue those practices and controls even after construction is completed.

Storm Water Program Examples of Erosion Control Tools



Inlet Protection



Silt Fence



For more information about City Utilities
Stormwater program please visit:

<https://utilities.cityoffortwayne.org/stormwater-system/program/faqs>

Proposed Schedule



Bidding Phase – September-Mid November

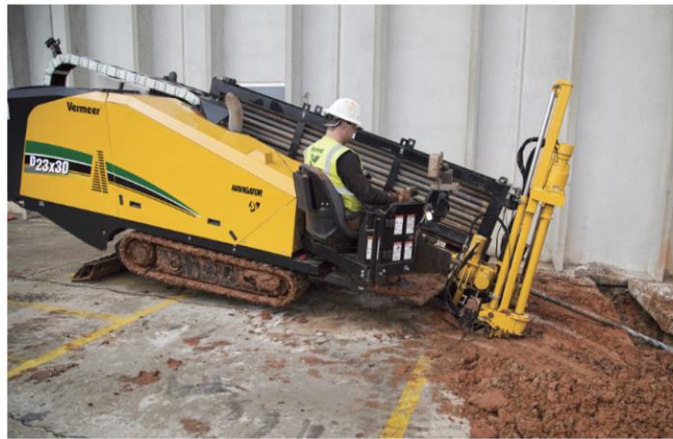
Construction – December 2025 through September 2026

- Anticipate contractor will start at west end and progress east to the proposed lift station site.

Preconstruction Activities



- Video documentation of preexisting site conditions
- Construction staking
- Utility locates will be identified with little flags
- Equipment and material staging



Closing Remarks



- City Utilities realizes construction can be a messy and aggravating process. We appreciate your patience with us and our contractors as we move this important project forward.
- Public safety and minimizing impacts to transportation are key components to the success of this project.

Contact Info



Questions on layout/design:

Nathan Baggett, PE

260-427-2066

Nathan.Baggett@cityoffortwayne.org

Questions during construction:

Mike Thomas

260-427-2834

Michael.Thomas@cityoffortwayne.org